



THAMES21: WORKING IN PARTNERSHIP WITH COMMUNITIES AND STAKEHOLDERS TO TRANSFORM RIVERS

Debbie Leach – Chief Executive

THAMES21: CHAMPIONING THE THAMES AND ITS TRIBUTARIES



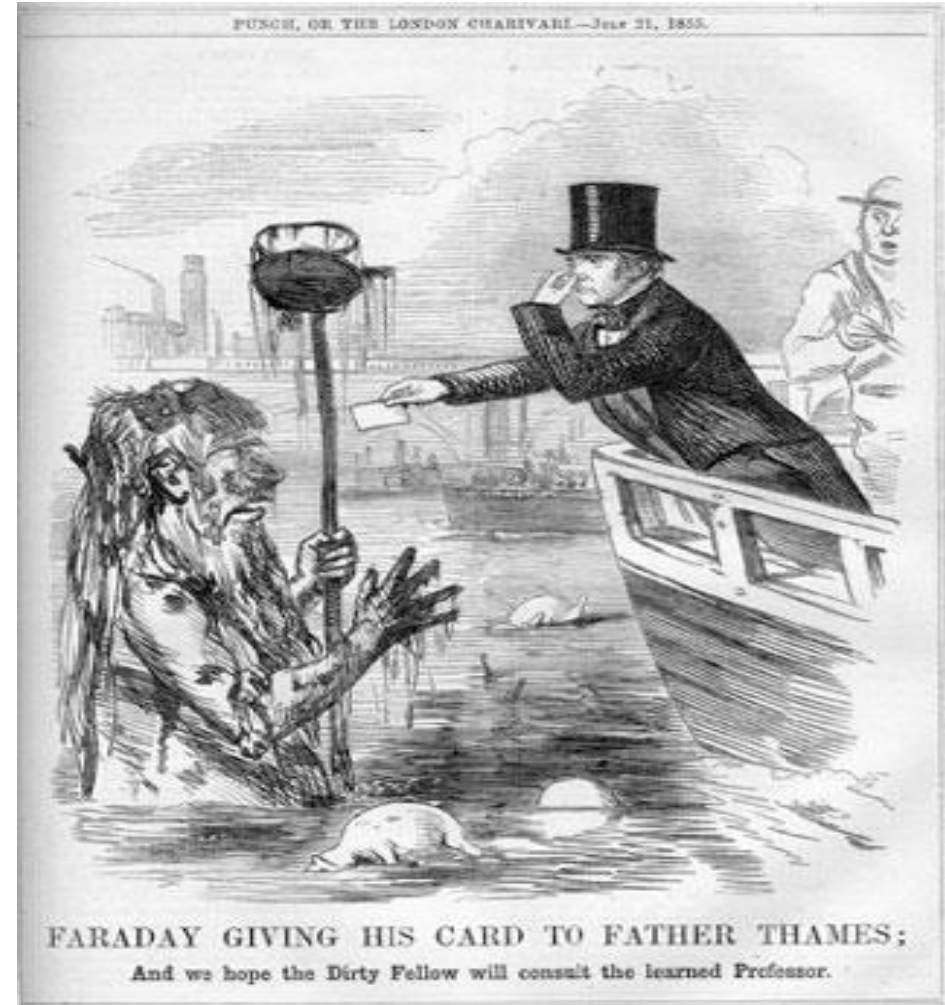
TAKING PRACTICAL ACTION

- Improving rivers across the city
- Tackling **pollution**
- Helping **wildlife** to **thrive**
- **Involving** community
- Educating **young people**
- Using practical **activities & volunteering** to **bring people together around the river**
- **Changing attitudes & behaviour**
- Inspiring **community pride** + ongoing river stewardship



HISTORIC CHALLENGES FACES BY THE RIVER

“Filthy river, filthy river,
Foul from London to the Nore,
What art thou but one vast gutter,
One tremendous common shore?
All beside thy sludgy waters,
All beside thy reeking ooze,
Christian folks inhale mephitis,
Which thy bubbly bosom brews.
All her foul abominations
Into thee the City throws;
These pollutions, ever churning,
To and fro thy current flows.”



NEW CHALLENGES OF LAST THIRTY YEARS



MOUNTING COMMUNITY CONCERN

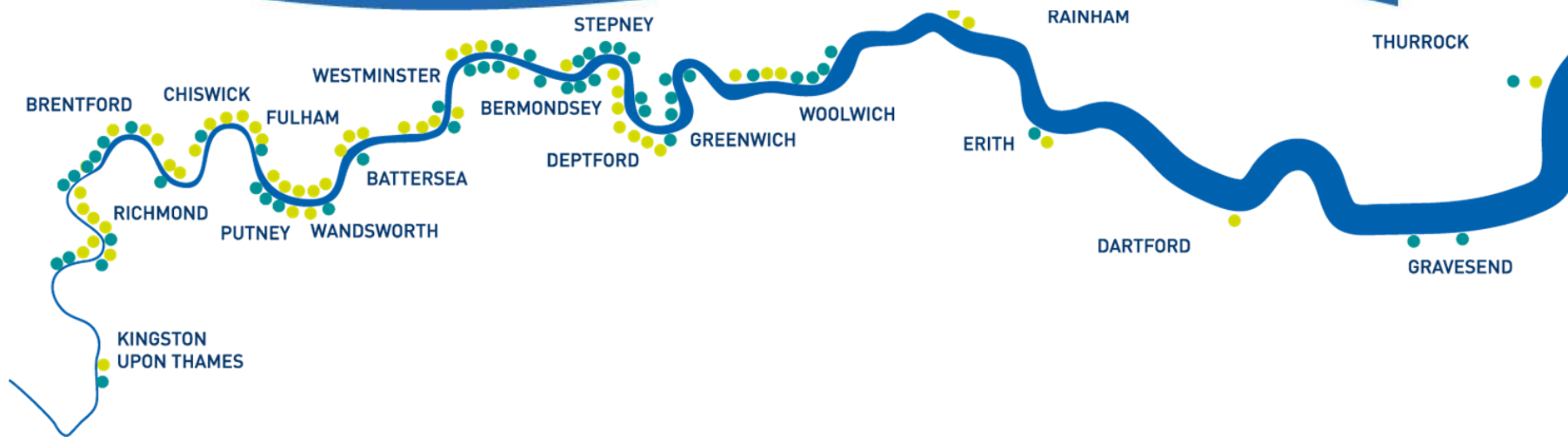


PARTNERSHIP PROJECT BETWEEN VOLUNTEERS AND THE PORT



THAMES RIVER WATCH

Understanding the health of the tidal Thames



A citizen science project training and supporting communities to investigate, better understand and evidence the environmental challenges faced by the river



USING ROBUST CITIZEN DATA TO INFLUENCE CHANGE

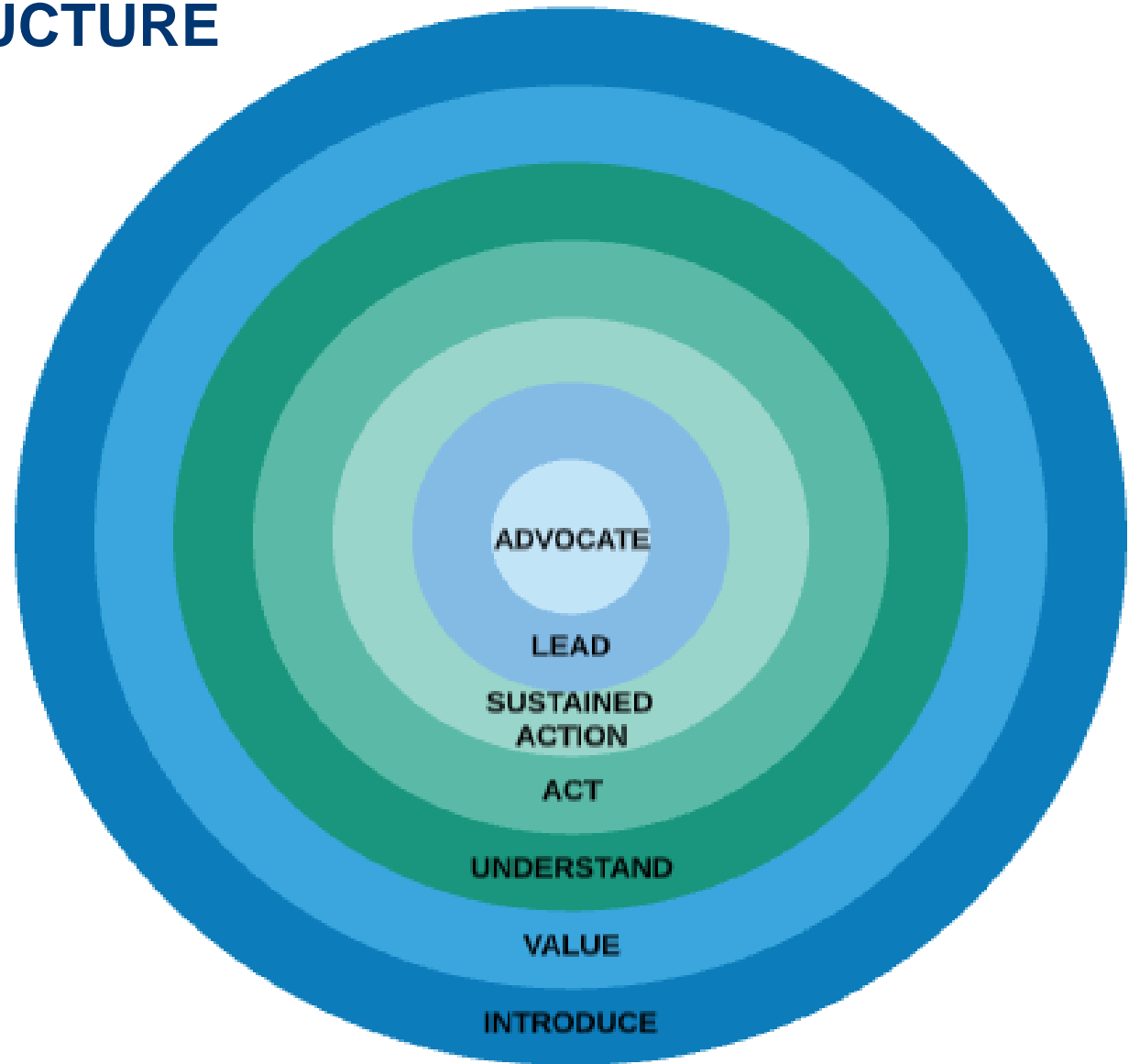


USING A RANGE OF ACTIVITIES TO INSPIRE AND EMPOWER PEOPLE



THAMES21 ENGAGEMENT STRUCTURE

- **Introduce** oneself to the river
- **Value** the river
- **Understand** the river
- **Act** on behalf of the river
- **Sustained Action** on the river
- **Lead** action to protect the river
- **Advocate** for the wellbeing of the river and its communities



LEARNING AND UNDERSTANDING



TAKING ACTION



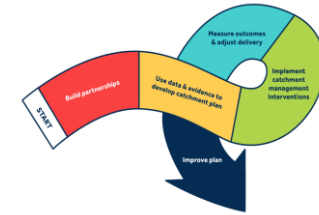
GATHERING EVIDENCE



SKILLS DEVELOPMENT: ACCREDITED TRAINING, SETTING UP AND SUPPORTING INDEPENDENT THAMES21 RIVER ACTION GROUPS



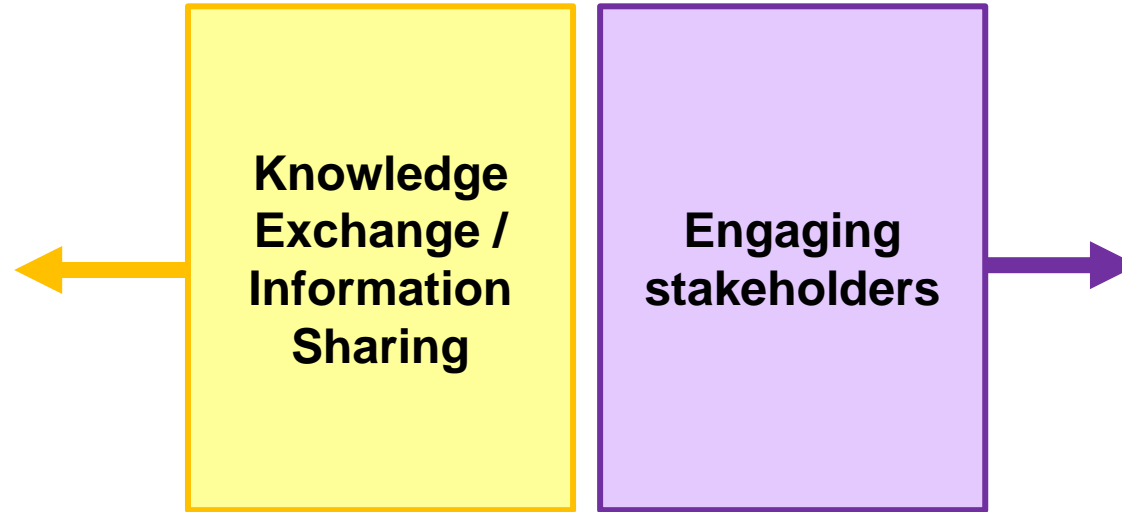
DEVELOPMENT OF CATCHMENT PARTNERSHIPS IN RESPONSE TO EUROPEAN LEGISLATION



4. MEASURE OUTCOMES



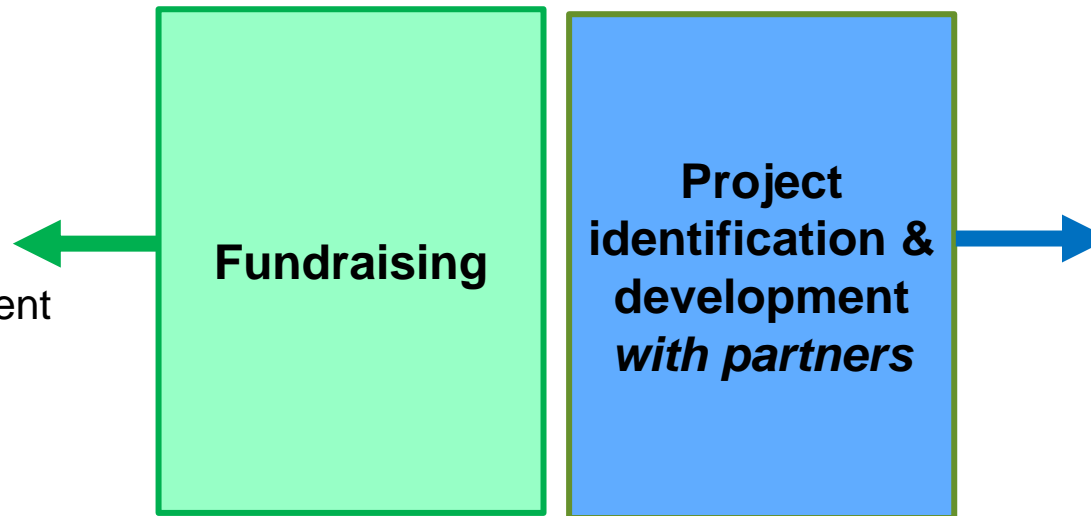
ADJUST DELIVERY



1. BUILD PARTNERSHIPS

3. IMPLEMENT INTERVENTIONS

- For projects
- For resilient catchment partnerships
- For host resilience



2. CATCHMENT ACTION PLAN

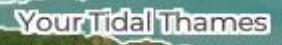
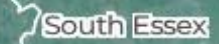
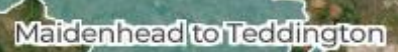


DATA & EVIDENCE



THAMES21 HOSTED CATCHMENT PARTNERSHIPS

4x HOSTED
6x CO-HOSTED



HISTORIC CATCHMENT PARTNERSHIP FUNDING

Part-funded through annual Environment Agency grants:-

- £15k for single catchment hosting
- Split for co-hosted partnerships (£7.5k per host for two host organisations)
- Reduced amount for sub-catchments (eg London Lea)



ADDITIONAL NEW FUNDING: THAMES WATER CATCHMENT PARTNERSHIP SUPPORT FUNDING (CAPS)

- **Five years of funding to develop catchment partnerships capacity** within Thames Water area
- Includes £10k **core host time funding** over 5 year period
- Plus funding to **develop partnership projects** in years two and three; and **deliver** in years four and five.



LOCAL AUTHORITIES AND CATCHMENT PARTNERSHIPS

- **Catchment Plans** often have **close links** to **local authority goals**, for example:-
 - **Natural Flood Management**
 - **Improved access** to green/blue spaces
 - **Biodiverse, climate resilient** parks
 - **Sustainable Urban Drainage systems**
 - **Tackling identifiable (point) sources of pollution** in rivers and streams
 - **Tackling plastic pollution**
- **Catchment hosts** can be a **useful resource** for **local authorities** by helping them with **project development, consultation** and **funding applications**



The Action for Silk Stream project was developed within the Brent Catchment Partnership and is being led by Harrow and Barnet Councils



WORKING IN PARTNERSHIP WITH LOCAL AUTHORITIES: EXAMPLE: LONDON BOROUGH OF ENFIELD

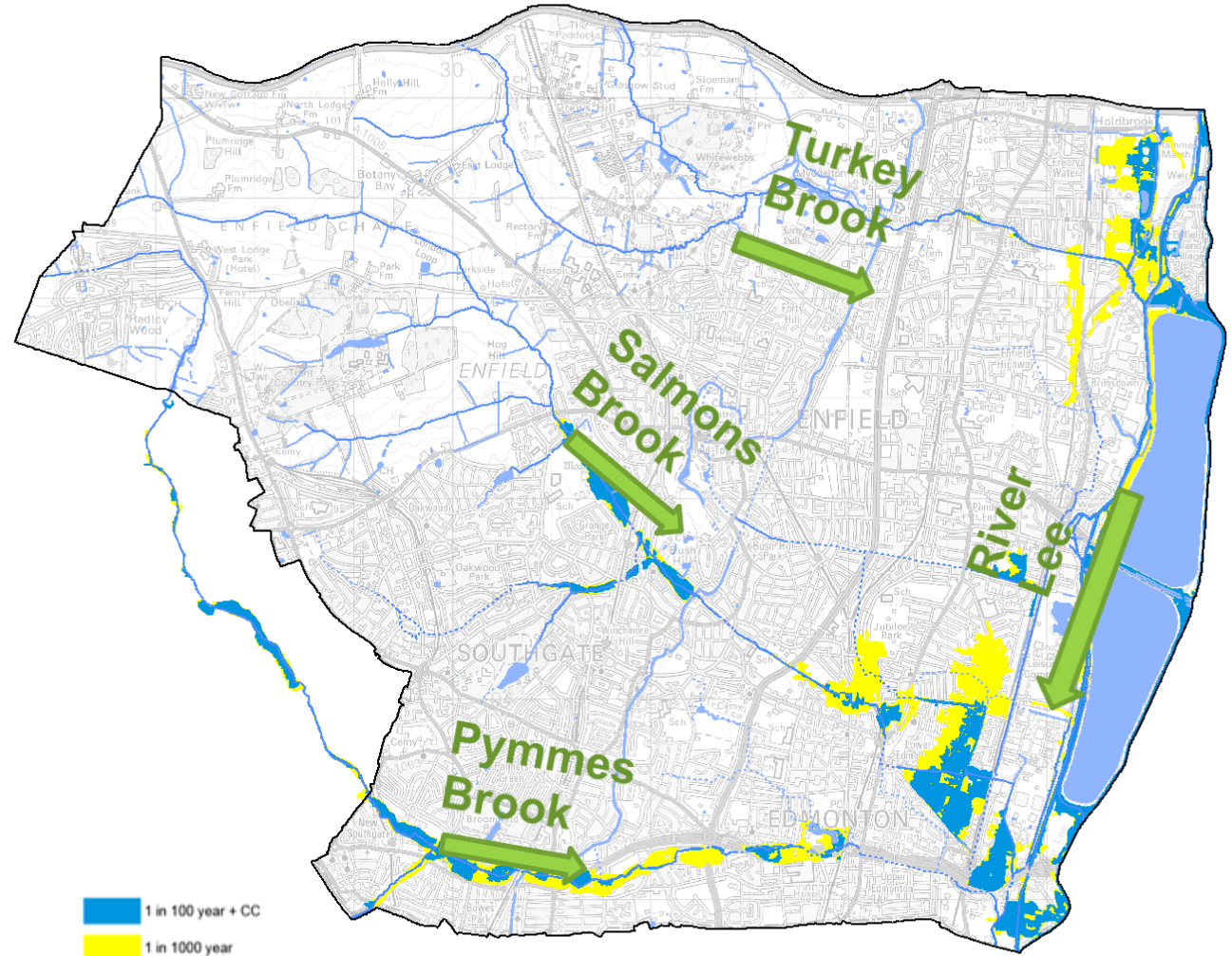


- **Benefits to London Borough of Enfield:-**
 - Access to additional funding sources for project delivery
 - Building stronger links with local communities
 - Enabling greater/ wider outcomes to be achieved
- **Benefits to Thames21**
 - Access to additional funding sources for project delivery
 - Political support
 - Landowner buy-in & direct contact to specific local authority teams
- **Successful partnership making best use of each organisation's key strengths:**
 - Enfield – design, construction, strategic planning
 - T21 – community engagement, water quality expertise, securing funding



CASE STUDY: SALMONS BROOK NFM PILOT

- Flooding in 2000 affecting 192 properties
- £15.3 million spent on EA flood alleviation scheme
- Yet some areas still remain at risk
- NFM investigation launched to seek ways low cost solutions can complement traditional hard engineered flood defences



SALMONS BROOK NFM PILOT

- Funded through **Thames RFCC, EA, LB Enfield**
 - **Community engagement**
 - **Opportunity mapping**
 - **Fundraising**
 - **Environmental improvement**
 - **Monitoring**
- **Restoration of Enfield Chase**
 - **Woodland creation**
 - **Rural Sustainable Drainage systems**
 - **River Restoration**
 - **Landscape Recovery**



CASE STUDY – FIRS FARM WETLAND

- **30,000m³ flood storage space** for £900,000
- Funded by **EA, Thames Water, LB Enfield, GLA, TFL**
- Establishment of **Friends of Group**
- **Outdoor classroom** facilities



FUTURE CHALLENGES:-

- **Maintaining momentum after Brexit** – will river and water environments slide down the government agenda??
- **Tackling the impacts of the Climate Emergency** – expanding activity and co-ordinating with others **across the Thames River Basin**
- Need for **all sections of the community** to be involved for success – across diverse
- urban and rural populations



IN THE LAST 5 YEARS THAMES21 HAS:-

- Organised **36,000+** volunteering opportunities
- Directly engaged **100,000+** people with their local river
- Involved **44,000+** children in educational activities
- Championed + expanded urban delivery of **integrated constructed wetlands**
- Introduced new **web of reedbeds** across canalised London water courses
- Established **Natural Flood Management** to protect **urban communities**
- Delivered **innovative new evidencing work** on ability of **Nature Based Solutions** to reduce river pollution
- **Led the sector in analysing and using data** on road pollution of rivers
- Removed **1000+** tonnes of rubbish from the River Thames alone
- Developed **nationally-accredited technical courses** for volunteers

